

HLK-4600

Camera Boom Arm With Pan & Tilt



The HLK-4600 Camera Boom Arm

has been designed for pipeline inspection work. Using a pair of these arms, pipelines of up to 36" can be easily inspected.

Its unique design allows the camera mount to stay at the same angle through the entire 120° of angular movement of the arm, without any adjustment. The camera mount can be tilted through a 120° and rotated through 360°. The arm uses Hydro-Lek's standard HLK-1300 hydraulic cylinders and HLK-2150 Pan & Tilt.

TECHNICAL SPECIFICATIONS

DIMENSIONS

Length of Arm	1350 mm
Height	310 mm
Width	120 mm

MOVEMENT RANGE

Up / Down	70-0-50°
Left / Right	90-0-30°
Camera Pan	360°
Camera Tilt	120°

WEIGHT

Weight in Air	27.0 Kg
Weight in Water	22.0 Kg

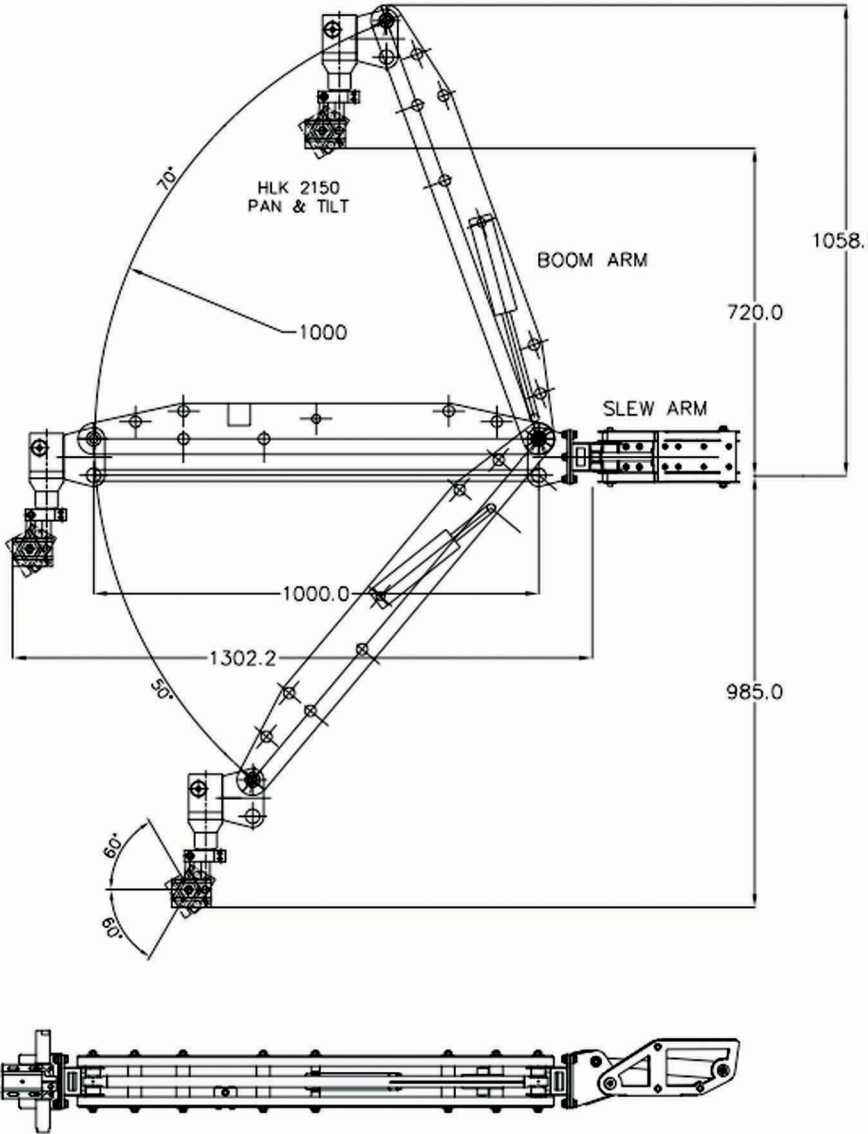
CONSTRUCTION

316 SS
HE 30 Hard Anodised Aluminium
Polyethylene

HYDRO-LEK - 4600PT BOOM

HLK-4600

Camera Boom Arm With Pan & Tilt



FOR SLEW PLATE FIXING DETAIL SEE DRG. CMR 5330

SPECIFICATION

OVERALL LENGTH 1625
 OVERALL HEIGHT 310
 OVERALL WIDTH 120
 WORKING PRESSURE 210 BAR
 WEIGHT IN AIR 27.0 KG (APPROX)
 WEIGHT IN WATER 22.0 KG (APPROX)
 MATERIALS: - HE 30 HARD ANODISED ALUMINIUM
 316 ST. STEEL
 NYLON 66
 POLYETHYLENE
 PORTS: - 1/8" NPT / 7/16" SAE

HYDRO-LEK LTD.	CAMERA BOOM
ISS. DATE: -	MAT: -
CHKD BY: - REV. NO: - 2	DRG. NO: - CMR 4600PT/DATA
DRAWN BY: - JO 14/4/10	C.M. INNOVATIONS LTD.



Eclipse Group, Inc.
 1997 Annapolis Exchange Parkway, Suite 300
 Annapolis, MD 21401, USA
 Tel: +1 410 533 3041
 E-mail: sales@eclipse.us.com
 www.eclipse.us.com

In-depth. Worldwide. Solutions.